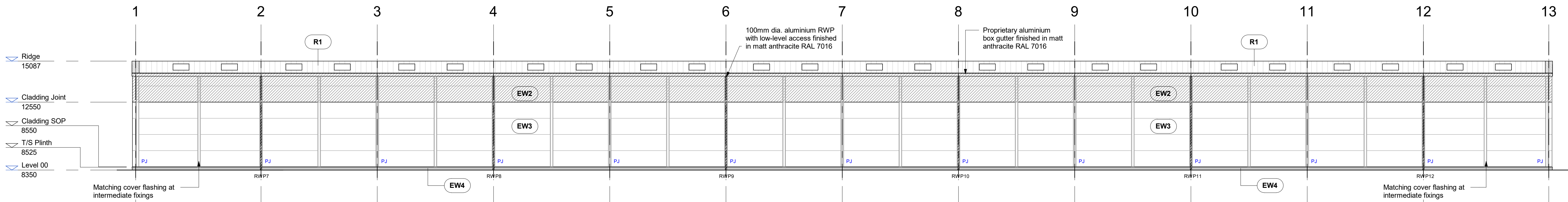
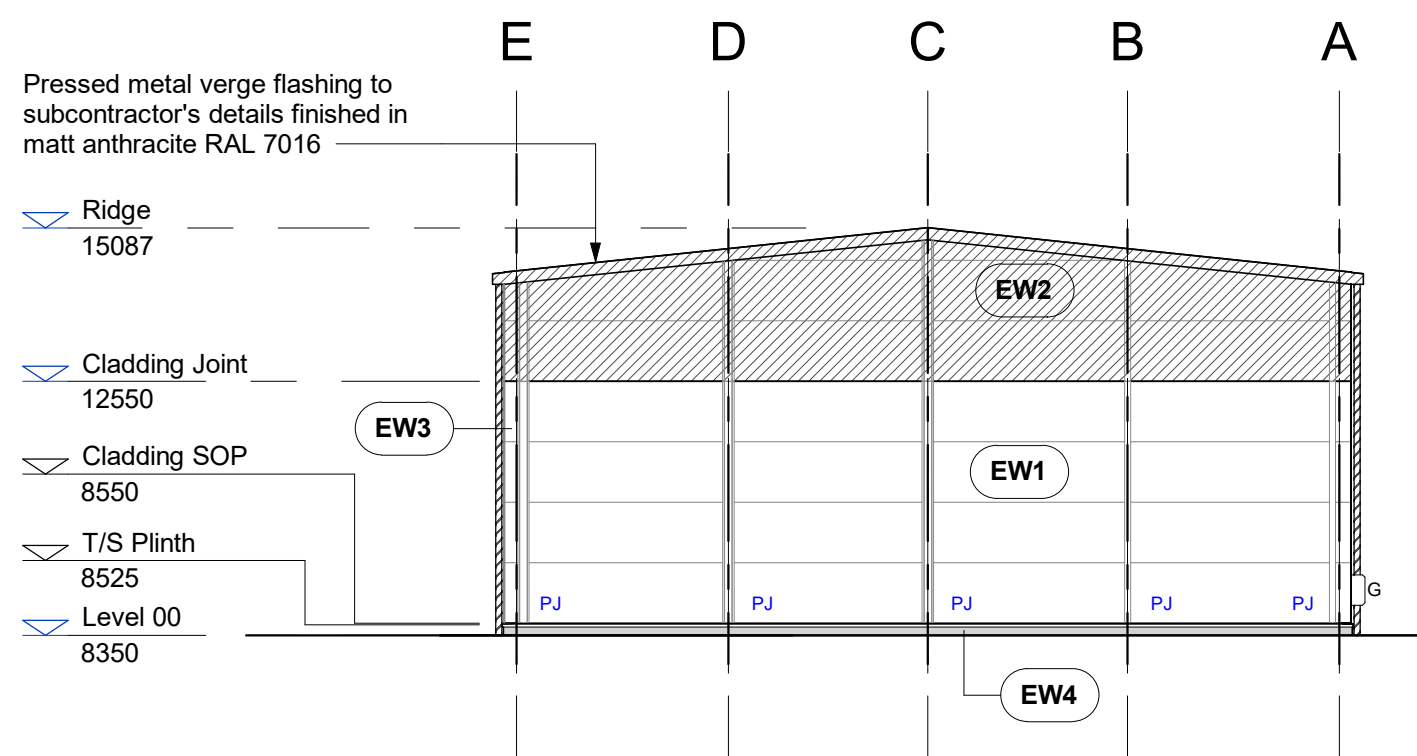


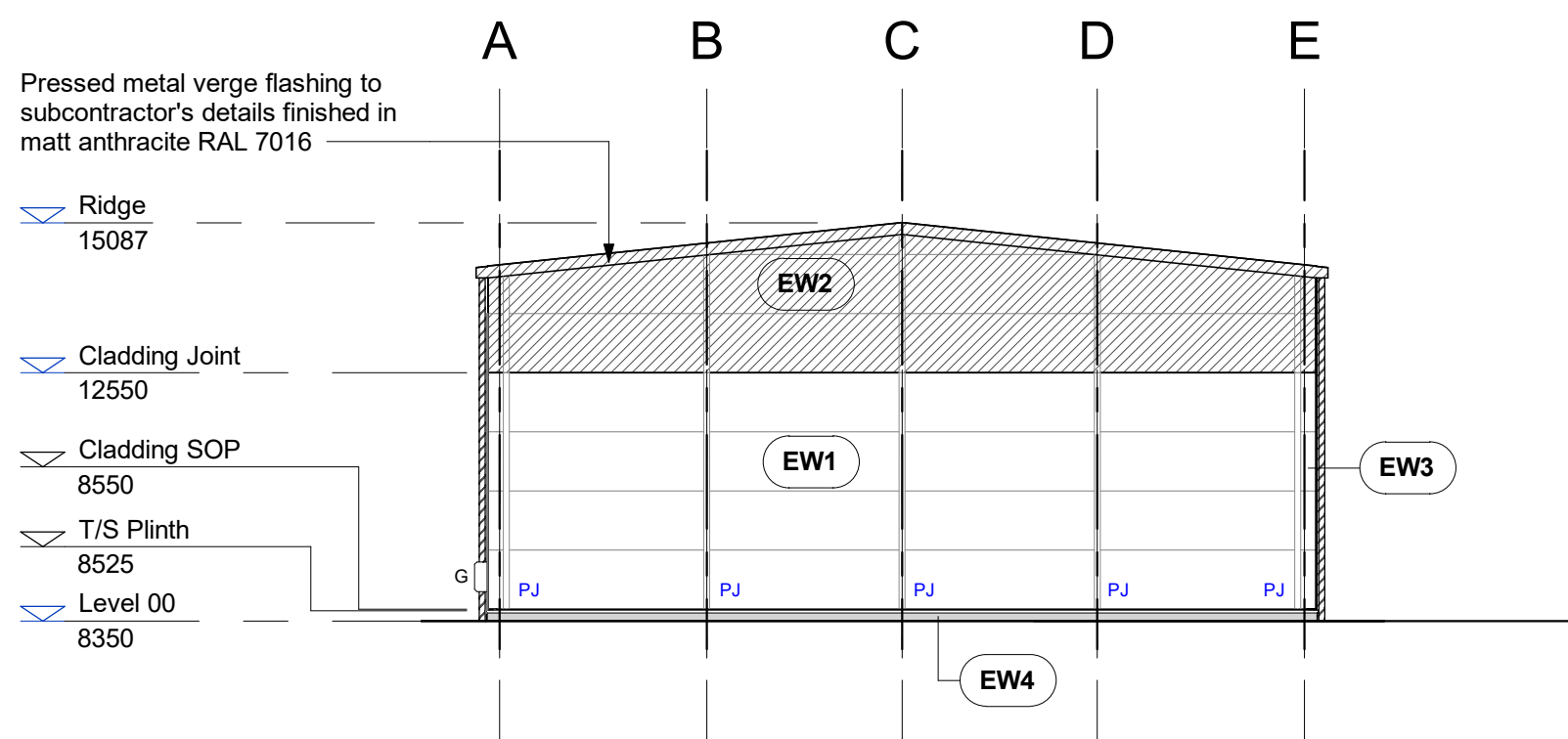
1 North General Arrangement Elevation
1 : 125



2 South General Arrangement Elevation
1 : 125



3 East General Arrangement Elevation
1 : 125



4 West General Arrangement Elevation
1 : 125



5 Part North Elevation_Coloured
1 : 125

Notes

External Wall Types

- EW1** 1000mm module - 150mm thick Trimo FTV Power T composite cladding - HPS200 Ultra 'Albross' - RAL 240 80 05'
- External profile - micro lined profile (m3)
 - Internal profile - V profile
 - U Value 0.25W/m²K
 - Fire Rating REI 180
- EW2** 1000mm module - 150mm thick Trimo FTV Power T composite cladding - HPS200 Ultra Matt 'Anthracite' - RAL 7016'
- External profile - smooth (g)
 - Internal profile - V profile
 - U Value 0.25W/m²K
 - Fire Rating REI 180
- EW3** 1000mm module - 150mm thick Trimo FTV Power T composite cladding - HPS200 Ultra 'Goosewing Grey' - RAL 7038'
- External profile - micro lined profile (m3)
 - Internal profile - V profile
 - U Value 0.25W/m²K
 - Fire Rating REI 180
- EW4** 200mm waterproof precast concrete plinth to specialist's design

Roof Types

- R1** Kingspan KS1000RW composite roofing panels with 115mm core thickness in standard XLForté finish
- 'Goosewing Grey' - RAL 080 70 05'
 - U Value 0.18W/m²K
- R2** Proprietary in-line mansafe rooflights (min 10% of floor area)
- Profile to match composite roofing panels
 - Width to match composite roofing panels
 - Provision to meet requirements of Approved document Part B

A5	C1	29/10/2018	CONSTRUCTION ISSUE
S1	P6	27/09/2018	Wall cladding spec updated / panel joint locations updated / window profiles & colours updated / part coloured elevation added / water and gas meters added
S1	P5	15/08/2018	Wall cladding spec updated
S1	P2	04/07/2018	First Issue

STATUS | REV | DATE | DESCRIPTION

Scaled dimension are not to be used for Contractor to check all dimensions and report omissions and errors to the Architect

Forum Architecture Ltd
Studio 52, Basepoint
Andersons Road
Southampton, Hampshire
SO14 5FE
tel: 023 8068 2095
www.forumarchitecture.co.uk

FORUM
architecture

CLIENT
Knights Brown Construction Ltd

KNIGHTS BROWN

PROJECT
Daedalus Park
Site B (North and South)

DRAWING TITLE
HERMES General Arrangement Elevations

DRAWING STATUS
A5 : FOR CONSTRUCTION

OWN BY
AMc

ORIGINATOR NO.
18013

CHK BY
TG

SCALE
As indicated@A1

PROJECT | ORIGINATOR | ZONE | LEVEL | TYPE | ROLE | CLASSIFICATION | NUMBER
DPSB-FORUM-HE-ZZ-DR-A-XXXX-3000

REVISION
C1